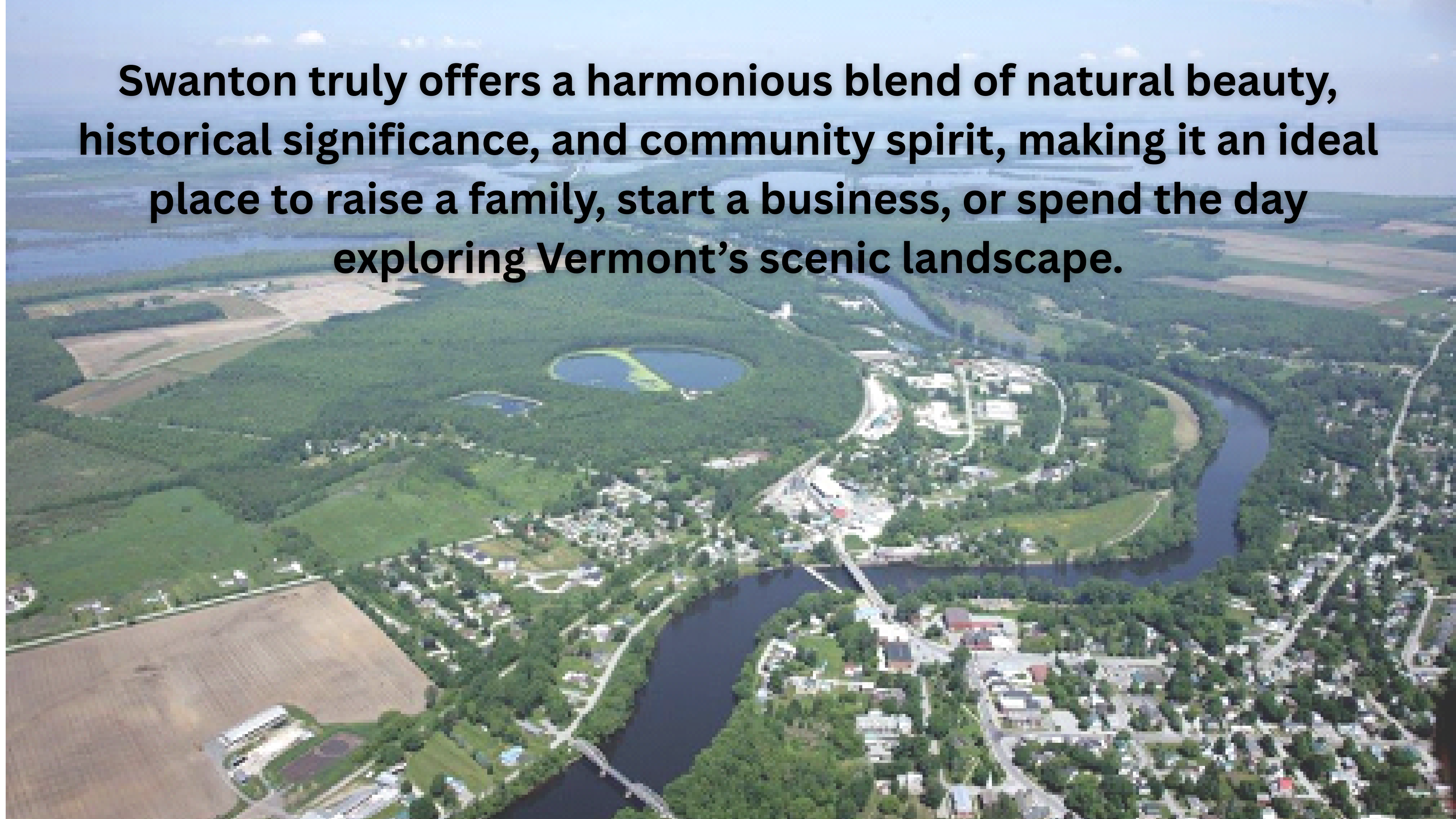


PROMOTE

SWANTON

OUR CONTINUING STORY OF ECONOMIC DEVELOPMENT

Swanton truly offers a harmonious blend of natural beauty, historical significance, and community spirit, making it an ideal place to raise a family, start a business, or spend the day exploring Vermont's scenic landscape.





Our goal with these projects is to **enhance Swanton's image and reputation, attract new residents, businesses, and visitors, and increase community pride and engagement** — all while preserving our **unique heritage and natural beauty.**

Over the past year, the Promote Swanton group, with strong support from the Swanton Selectboard and the Swanton Village Trustee, have been leading a community rebranding project.

**A new community logo that reflects the authentic character
and welcoming nature of Swanton.**



New welcome signs at the entrances to town, creating a strong first impression for visitors and travelers.

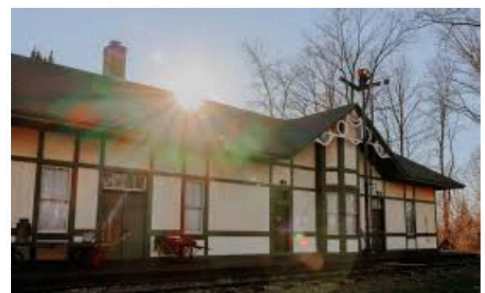


A brochure highlighting our recreational assets, complete with a map of our community, key points of interest, and a QR connecting residents and visitors to local businesses



Missisquoi Wildlife Refuge

A protected area focused on providing habitat for migratory birds, and a variety of other wildlife with 5 public trails and 2 boat ramps.
www.fws.gov/refuge/missisquoi



Ronald F. Kilburn Transportation Museum

Onsite is a historic caboose, a relocated toll house, a railway turntable, and nearby walking trails.
Hours:
Monday–Saturday 11am–3pm
Sunday 12pm–11:59pm



Swanton Library

A community-focused center dedicated to provide quality resources, services, and programs.
Hours:
Monday, Wednesday, Friday 10am–6pm
Tuesday, Thursday, Saturday 10am–2pm



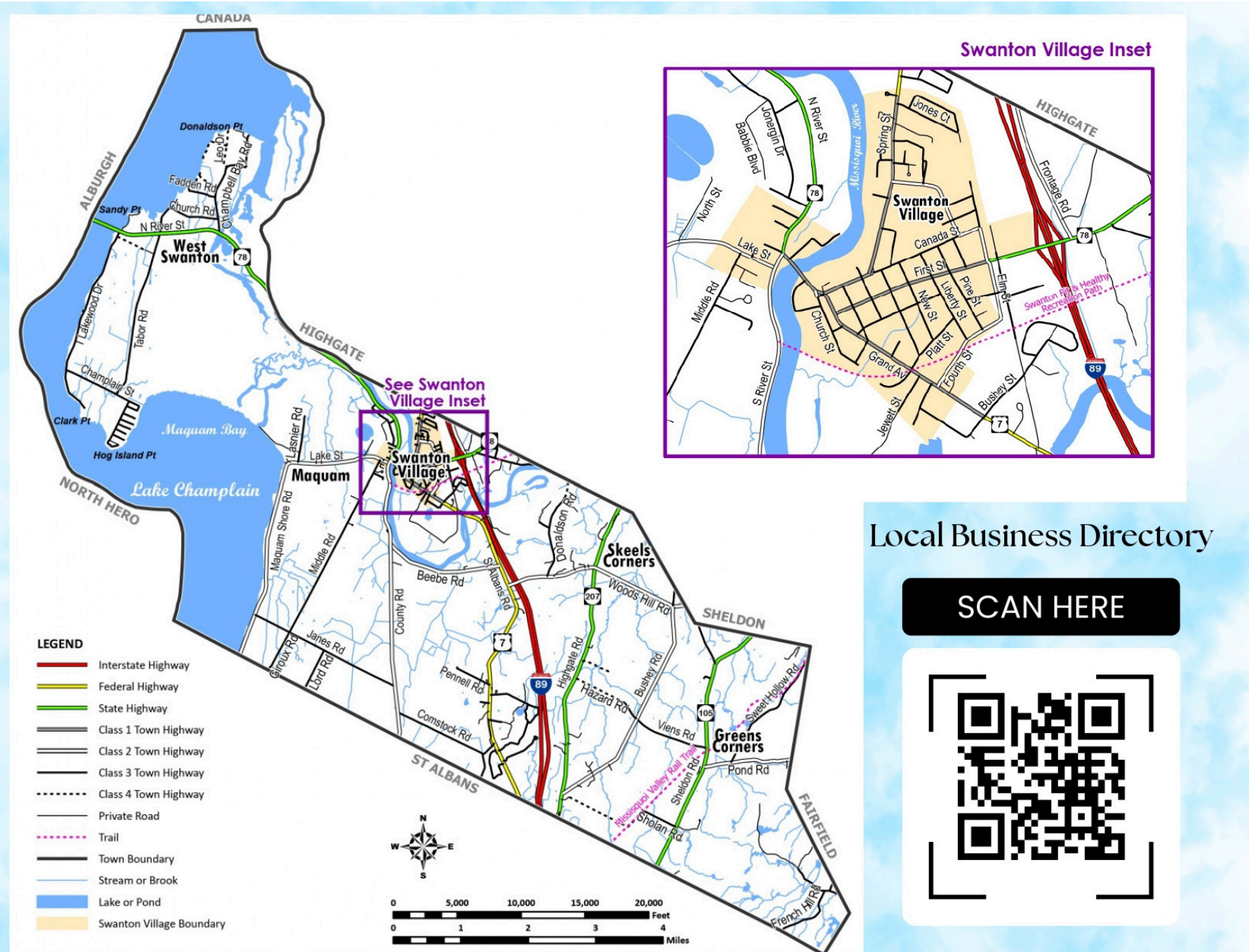
Swanton Rec

Wide variety of recreational activities and programs for all ages.
Hours:
Monday–Friday 8:30am–3pm
swantonvt.myrec.com

Welcome to



www.swantonvt.gov



The rebrand isn't just about visual updates. A major piece of this work is revamping the Town and Village website to better serve both residents and visitors.

The new website will be modern, user-friendly, and informative, with clear navigation and resources

Enjoy Swanton

Experience the welcoming spirit of Swanton, Vermont, nestled near beautiful Lake Champlain. Enjoy delicious local dining options, find a cozy place to rest your head, and browse the unique offerings in our shops for a truly relaxing and authentic Vermont visit.



Wine and dine in Swanton.

Eat



Come and stay a while.

Stay



Visit our unique shops.

Shop

Our goal is to create a platform where community businesses, residents and visitors alike can easily find information, submit business listings and subscribe for email notifications

Submit Your Business Info

FAQ

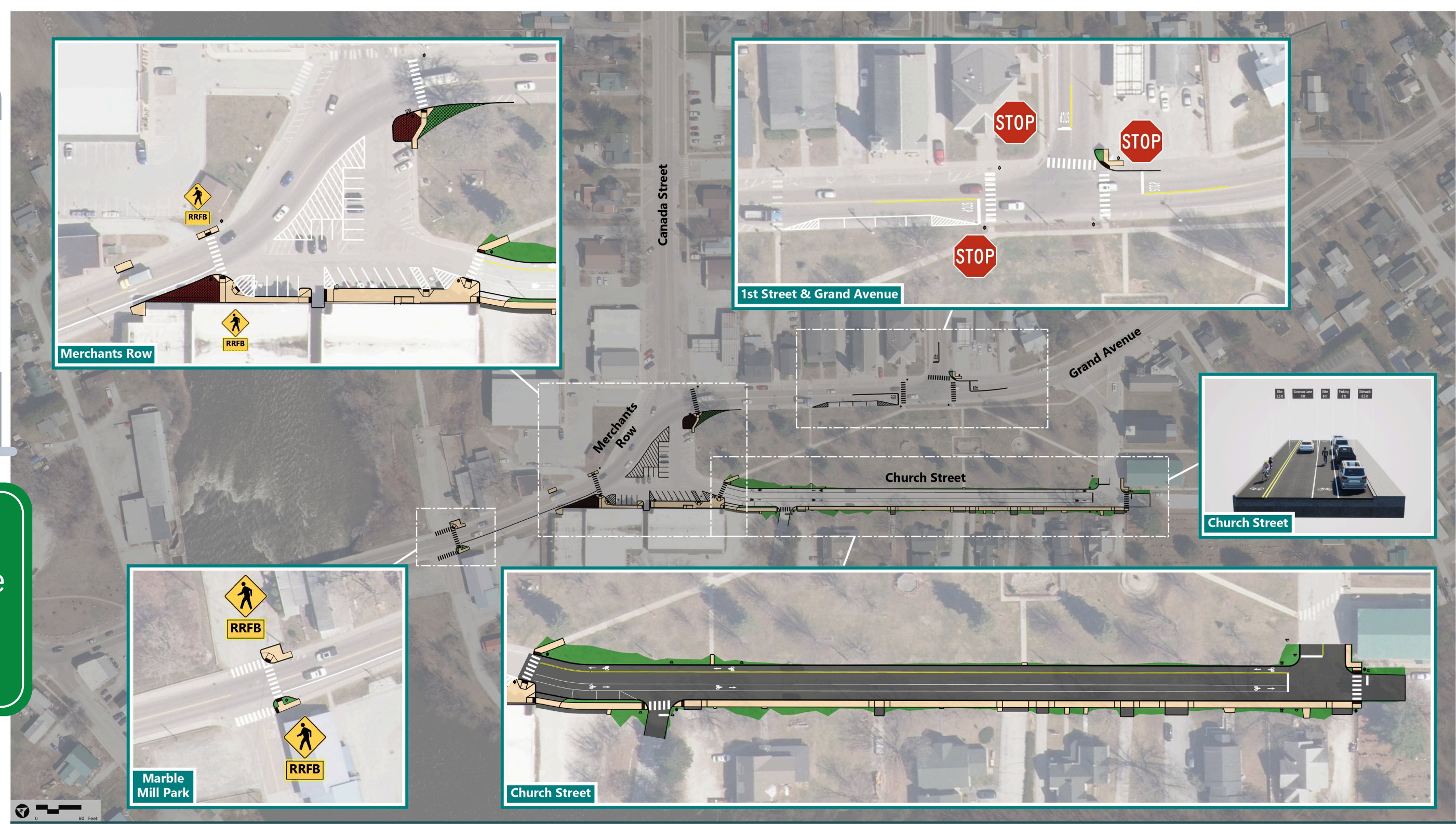
Who do I call for...

- **Police Department?** Emergency 911 or (802) 868-4100
- **A Dog License?** Town Office at (802) 868-4421
- **A Building Permit?** Zoning at the Town Office (802) 868-3325
- **A Birth Certificate, Marriage License or Death Certificate?** Town Office at (802) 868-4421
- **A Burn Permit?** Fire Warden, Jon Barrette at (802) 868-3327
- **New Electrical Service?** Village Office at (802) 868-3397
- **Delinquent Taxes?** Betty Cheney at (802) 310-0522
- **Copy of a Tax Bill?** If you live in the Village – (802) 868-3397, if you live in the Town – (802) 868-4421

Town of Swanton P.O. Box 711 1 Academy Street Swanton, VT 05488 <u>802-868-4421</u> 802-868-4957 (fax) <u>townadmin@swantonvermont.org</u>	Village of Swanton 120 First Street Swanton, VT 05488 <u>802-868-3397</u> 802-868-3930 (fax) <u>village@swanton.net</u>	Subscribe to notifications Search Site Map Contacts Privacy Policy
---	---	--

In addition to all the work we have put into our digital presence, we aim to work on Wayfinding and Placemaking strategies to encourage exploration in Swanton.





Swanton Downtown

Transportation Alternatives Program: TAP TA 22(8) & TAP TA 24(7)

Roadmap to make a more accessible downtown

Wayfinding and placemaking are key investments in Swanton's future — creating welcoming spaces, guiding exploration, and supporting the exciting changes coming to our downtown.

Swanton is at an exciting crossroads. By combining our rich history with a vision for the future, we can create a vibrant, welcoming community where people feel connected — to nature, to each other, and to the opportunities here.

