

VILLAGE OF SWANTON



April 27, 2026

INTRODUCTIONS



BETH WHITE

Founder of **Habitat for Aviation**
Youth Program Coordinator for **EAA**



JOHN FITZGERALD

Local Business Owner - **Fly Vermont**
President of **EAA Chapter 613**

COMMUNITY-SERVING ORGANIZATIONS

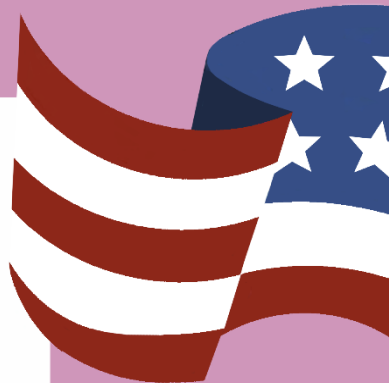


501 (c)³ **Nonprofit**
community of **aviation**
enthusiasts founded in
1953

We provide **education,**
mentorship, and
hands-on learning

WHERE
WOMEN
BUILD
PLANES

CURRENTLY
47%
OF **WOMEN**
MAKE UP OUR
U.S. WORKFORCE



ONLY
2.6%
OF LICENSED AVIATION
MAINTENANCE TECHS
ARE WOMEN



Women in Aviation Advisory
Board (WIAAB)

WHERE
WOMEN
BUILD
PLANES

AND ONLY
3.6%
OF AIRLINE
CAPTAINS ARE
WOMEN

Making one of the **greatest
gender gaps** in the entire
industry.

—
US Airline Pilots Association
International (ALPA)





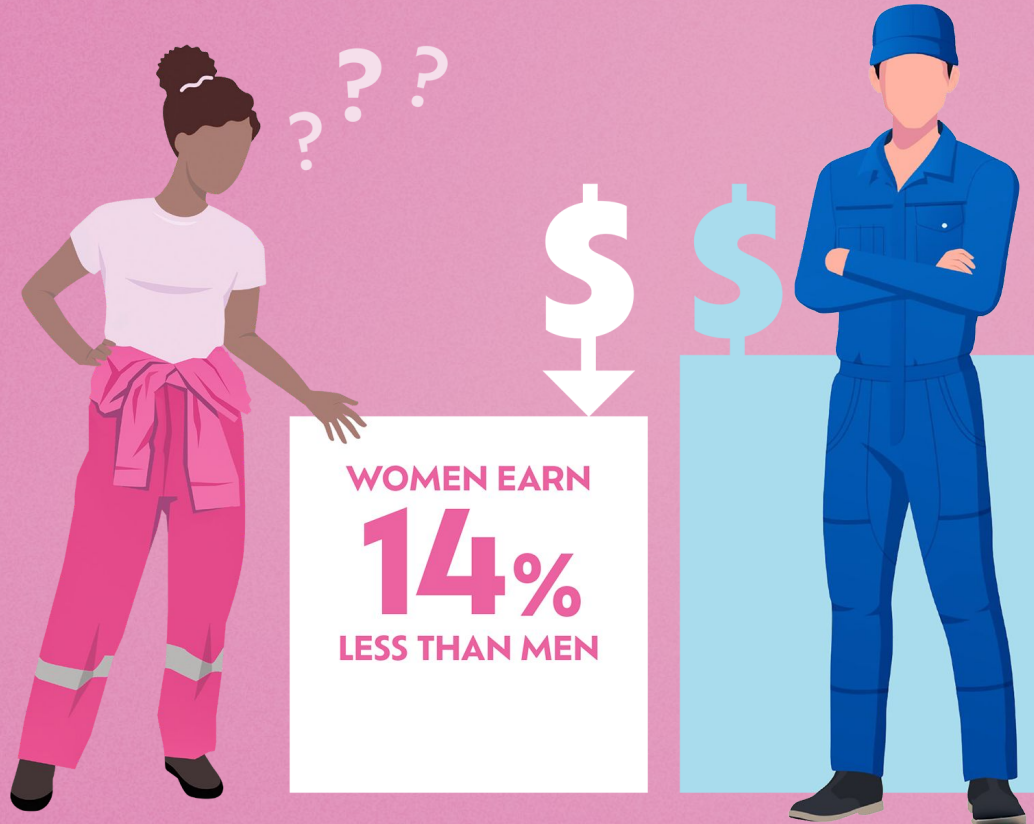
**Habitat
for Aviation**

**THERE REALLY IS MORE TO
HABITAT FOR AVIATION
THAN JUST BUILDING
AN AIRPLANE...**

Much More!



WHY THIS MATTERS FOR VERMONT?



Women working full-time in Vermont earn just 86¢ for every dollar earned by men

A RAPIDLY GROWING INDUSTRY

11% GROWTH

from 2020–2030 is projected
for airplane mechanics and
technicians — **faster than
all occupations***.



*U.S. Bureau of Labor Statistics

Airplane Mechanics
Technicians is anticipated to
**grow 11% from 2020-2030,
faster than all occupations**

US Bureau of Labor Statistics

A RAPIDLY GROWING INDUSTRY

1 OUT OF 4

airplane mechanic jobs will
be vacant by 2027*.



*Oliver Wyman

One out of four airplane
mechanic jobs will be
vacant by 2027

Oliver Wyman

Potentially fewer flights,
more delays

FIRST ALL-WOMEN YOUTH-ADULT PLANE BUILD



Hands-on aircraft **construction**

real work in the field

Building a sense of
community and **belonging**

Enrichment activities

- Lunch & Learns
- Open-Hangar Events
- Presentations

MULTI-GENERATIONAL LEARNING



Our **youngest** builder is **nine** and our **eldest** is **Granny!**

We **learn from one another**

Our **multi-generational** team is **special**

1,000 HOURS BUILD TIME
APPROXIMATELY 10K RIVETS

Habitat
for Aviation

WHERE
WOMEN
BUILD
PLANES



Rans S-21 Airplane Kit

Sundays at **Franklin
County State Airport**
11 AM - 5 PM

We're **taking our time**

WHAT HAPPENS WHEN WE FINISH THE PLANE?



Use as a **training aircraft** for our team

Fly to **airshows** and **open hangar events** at each **Vermont Airport** to show everyone everywhere that

Women BUILD planes

Women FIX planes

Women FLY planes



EXPERIMENTAL AIRCRAFT ASSOCIATION



We welcome pilots,
students, and anyone
interested in aviation

We make aviation more
accessible by weaving a
welcoming community

EXPERIMENTAL AIRCRAFT ASSOCIATION



- ⇒ Pancake Breakfasts
- ⇒ Summer BBQs
- ⇒ Fly-ins/Fly-outs
- ⇒ Educational programs
- ⇒ Flight Training Devices (Sims)

EXPERIMENTAL AIRCRAFT ASSOCIATION



Young Eagle Programs

- ⇒ FREE **flights** for youth ages 8–17
- ⇒ FREE online **ground school**
- ⇒ FREE **student membership**
- ⇒ FREE **first flight lesson** after completing Sporty's
- ⇒ **Mentorship**

EXPERIMENTAL AIRCRAFT ASSOCIATION



Youth Aviation Committee

- ⇒ **Connect youth to resources** for flight, mechanic, anything aviation-related
- ⇒ **Scholarship Wrangling**

EXPERIMENTAL AIRCRAFT ASSOCIATION



Youth Aviators

⇒ **19 Youth earned their Private Pilots Licenses (PPL) through our program before or just after graduating high school since 2018**

⇒ **47.4% were women*!**

*Only 5% of US pilots are women

SUPPORT FOR INFRASTRUCTURE



ECONOMIC DEVELOPMENT ADMINISTRATION (EDA)

- Tour
- Letters of Support

SUPPORT FOR INFRASTRUCTURE

- We are low usage, **community-serving** organizations
- We rely on **grants** and **donor support**
 - Not high revenue operations
- Current **commercial rates do not match usage**
 - Both nonprofits are severely overpaying

OUR ASK

OPTION 1: Reclassify HFA & EAA as Residential

- Rates aligned with **actual usage**

OPTION 2: Create **Nonprofit Rate Tier**

- For local organizations
- Low usage + clear community benefit

OPTION 3: Introduce **Low Usage Commercial Rate**

- For non-residential properties
- Minimal water consumption

OPTION 4: Same **Rate for All Users**

ALIGN WITH PROVEN APPROACHES ACROSS VERMONT

HARDWICK

- Has **Low Usage Commercial Rate**
 - Residential rate, distinct classification

GRAND ISLE

- Has **Small Business Rate**
 - If user exceeds 80,000 gallons annually, **reclassified** as large business rate

THANK YOU



Habitat
for Aviation

